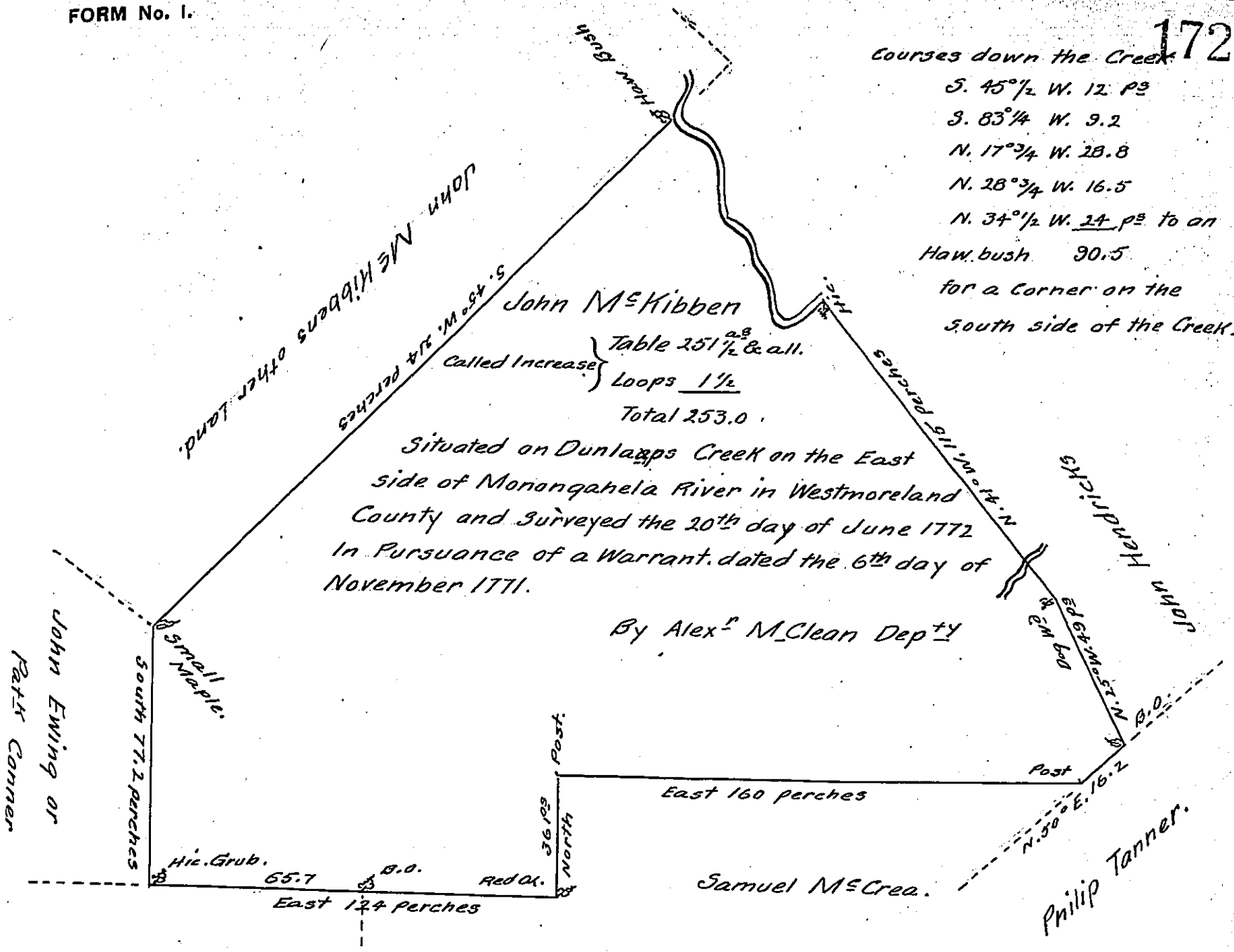


Courses down the Creek
 S. 45° 1/2 W. 12 P³
 S. 83° 1/4 W. 9.2
 N. 17° 3/4 W. 28.8
 N. 28° 3/4 W. 16.5
 N. 34° 1/2 W. 24 P³ to an
 Haw. bush 30.5
 for a Corner on the
 South side of the Creek.



John McKibben
 Table 251 1/2 & all.
 Called Increase } Loops 1 1/2
 Total 253.0
 Situated on Dunlapps Creek on the East
 side of Monongahela River in Westmoreland
 County and Surveyed the 20th day of June 1772
 In Pursuance of a Warrant, dated the 6th day of
 November 1771.

By Alex^r M. Clean Dep^y

Robert Gilmore

To John Lukens Esq^r
 Surveyor General.

IN TESTIMONY that the above is a copy of the original remaining on file in
 the Department of Internal Affairs of Pennsylvania, made
 conformably to an Act of Assembly approved the 16th day of
 February, 1833, I have hereunto set my Hand and caused
 the Seal of said Department to be affixed at Harrisburg,
 this... Seventh... day of... December... 1905.

Isaac B. Brown
 Secretary of Internal Affairs.